



# MONTHLY MEMBERSHIP PROGRESS REPORT

District 17 K

Results as of: 05/31/2018

GMT: WILLIAM PHILLIPI

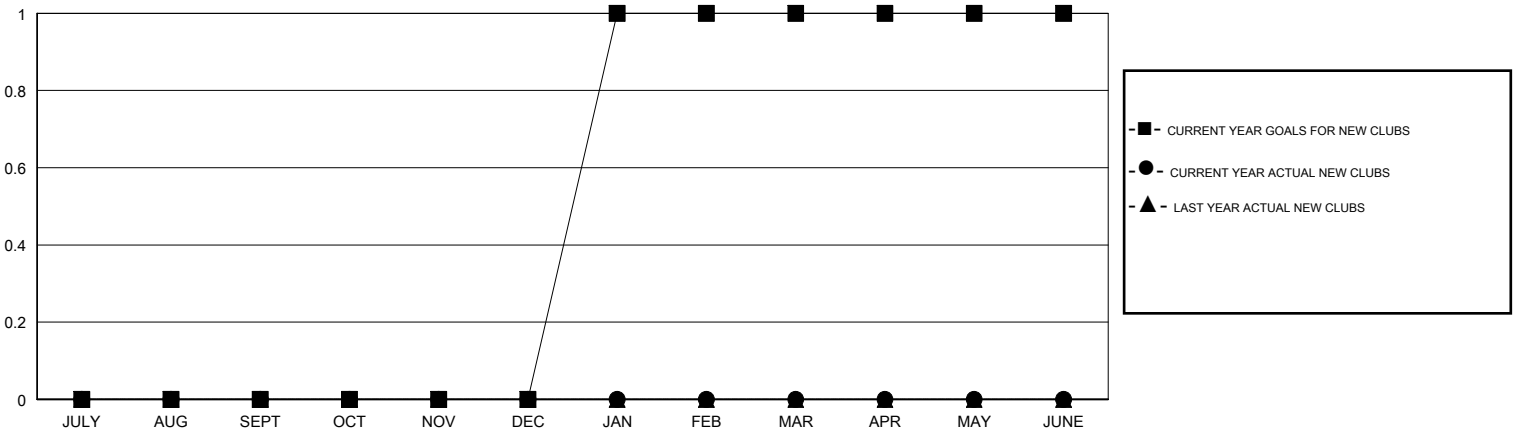
LOCATION KANSAS

GMT CA

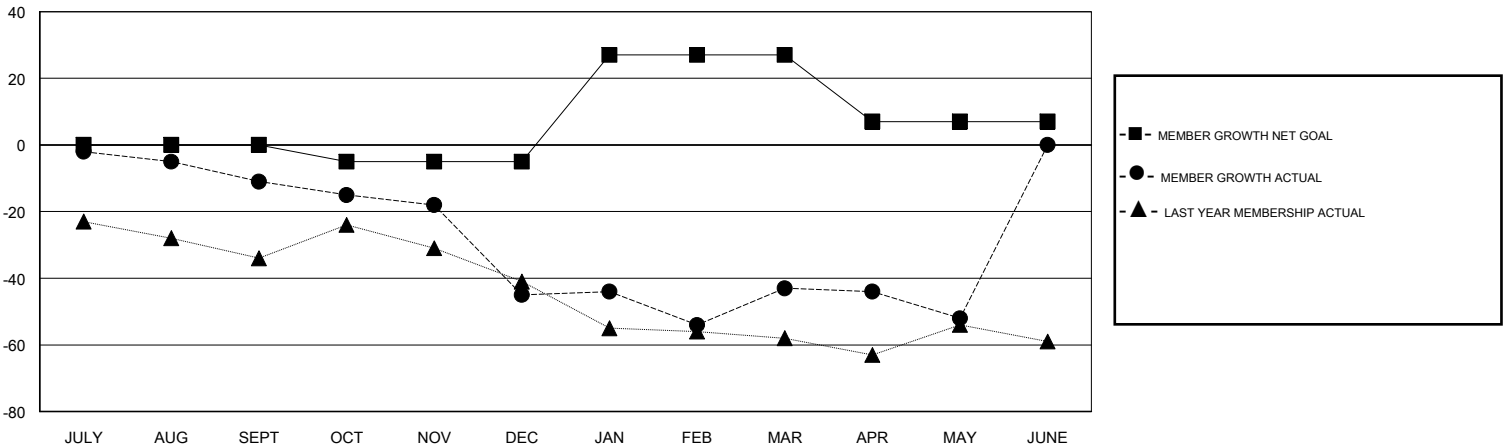
Clubs			
RESULTS FOR 2017-2018			
QUARTER	NEW CLUB GOAL	NEW CLUBS	DROPPED CLUBS
JULY/AUG/SEPT	0	0	0
OCT/NOV/DEC	0	0	1
JAN/FEB/MAR	1	0	1
APR/MAY/JUNE	0	0	0

Members			
RESULTS FOR 2017-2018			
QUARTER	MEMBER GROWTH NET GOAL	MEMBER GROWTH ACTUAL	DROPPED MEMBERS ACTUAL (including transfers)
JULY/AUG/SEPT	0	21	30
OCT/NOV/DEC	-5	23	55
JAN/FEB/MAR	32	34	30
APR/MAY/JUNE	-20	15	21

GOALS AND ACTUAL NEW CLUBS CUMULATIVE



GOALS AND ACTUAL MEMBERS CUMULATIVE



DROPPED CLUBS: 2
------------------

37 CLUBS OF 78 ADDED 1 OR MORE NEW MEMBERS

GENDER DISTRIBUTION	
MALE	1,113 (74.10%)
FEMALE	389 (25.90%)
Women Percentage Fiscal Year Goal: 27%	

DROPPED MEMBERS	
DECEASED	14
CLUB CANCELLED	11
OTHER	111
<b>TOTAL</b>	<b>136</b>

[CLICK HERE FOR CUMULATIVE MEMBERSHIP DATA](#)

TOTAL FAMILY UNIT MEMBERS	312
FAMILY MEMBERS PAYING HALF DUES	158